

Angler's Logbook

Since April 1, 2018, anyone wishing to fish salmon in zones 23 and 24 must use the services of an outfitter. Anglers may therefore use this logbook to register with an outfitter and to record their catches. The Ministère des Forêts, de la Faune et des Parcs (MFFP) is also asking anglers to sample scales from the salmon they wish to keep, and a scale sampling protocol is presented in this logbook. The scales provided by anglers will provide the MFFP with information on salmon growth rates, migration strategies and population age structures, and will ultimately help it to manage the resource with a view to ensuring its sustainability.

At the end of their stay, anglers must report to the outfitter with whom they had previously registered, in order to hand over the logbook and the scales sampled, if any.

Contact information of angler

Full name:

Address:

Salmon fishing licence number:

Phone number:

Name of the Outfitter:

Information on Atlantic salmon catches (*Salmo salar*)

Salmon 1	Date: DD/MM/YY	Catch location:		Tag number:
Scales taken:	<input type="checkbox"/> Yes <input type="checkbox"/> No	Total weight (kg) :	Eviscerated weight (kg):	Fork length:
Salmon 2	Date: DD/MM/YY	Catch location:		Tag number:
Scales taken:	<input type="checkbox"/> Yes <input type="checkbox"/> No	Total weight (kg) :	Eviscerated weight (kg):	Fork length:
Salmon 3	Date: DD/MM/YY	Catch location:		Tag number:
Scales taken:	<input type="checkbox"/> Yes <input type="checkbox"/> No	Total weight (kg) :	Eviscerated weight (kg):	Fork length:
Salmon 4	Date: DD/MM/YY	Catch location:		Tag number:
Scales taken:	<input type="checkbox"/> Yes <input type="checkbox"/> No	Total weight (kg) :	Eviscerated weight (kg):	Fork length:

Total number of salmon caught and released

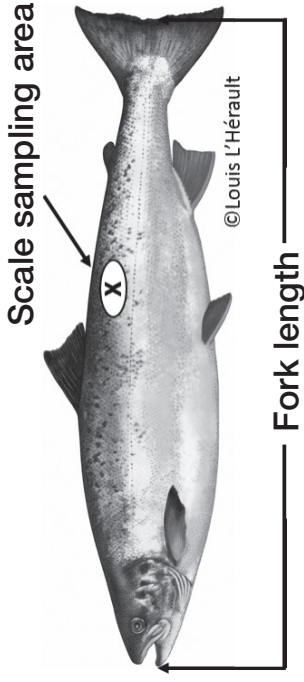
Date	DD/MM/YY	DD/MM/YY	DD/MM/YY	DD/MM/YY	DD/MM/YY
Number					

Information on catches other than Atlantic salmon

Date	Catch location	Total number of brook trout	Total number of northern pike	Total number of lake trout	Total number of arctic char
DD/MM/YY					
DD/MM/YY					
DD/MM/YY					
DD/MM/YY					
DD/MM/YY					
DD/MM/YY					
DD/MM/YY					

Protocol for sampling scales

- Fill out all the details on the detachable scale sample data form (see following pages) and scale sample envelope, if any.
- Wipe one flank of the salmon.
- Dislodge 20 to 30 scales from the flank of the fish, where marked with an X (see illustration), that is, 3 to 6 rows of scales above the lateral line, between the dorsal and anal fins.
- Gently run a clean knife (free from scales) in the direction of the head to loosen the scales.
- Wipe the knife off with the detachable scale sample data form, duly completed.
- Fold the data sheet in half and put it in the scale sample envelope provided to that effect. If no envelope is provided, use a zip-top plastic bag.



If the specimen is tagged, please also place the tag in the envelope or bag.

This information is important, since it will add to our knowledge of salmon biology and will help improve our management of the resource.

N.B. Scales should not be removed from fish that are released back into the water.

Detachable Scale Sample Data Form - Atlantic Salmon (*Salmo salar*)

Name of the angler:

Capture date: DD/MM/YY

River (with GPS coordinates if possible):

Fork length:

Weight (kg):

Detachable Scale Sample Data Form - Atlantic Salmon (*Salmo salar*)

Name of the angler:

Capture date: DD/MM/YY

River (with GPS coordinates if possible):

Fork length:

Weight (kg):

Detachable Scale Sample Data Form - Atlantic Salmon (*Salmo salar*)

Name of the angler:

Capture date: DD/MM/YY

River (with GPS coordinates if possible):

Fork length:

Weight (kg):

Detachable Scale Sample Data Form - Atlantic Salmon (*Salmo salar*)

Name of the angler:

Capture date: DD/MM/YY

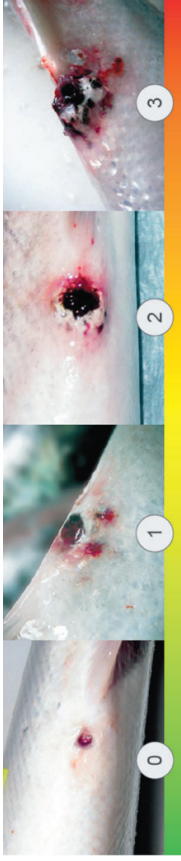
River (with GPS coordinates if possible):

Fork length:

Weight (kg):

Additional information

Declaration of the *Anisakis simplex* parasite (red vent syndrome). For each salmon kept, indicate the corresponding stage (0-3), based on the photos below:



Salmon 1:	Salmon 2:	Salmon 3:	Salmon 4:
-----------	-----------	-----------	-----------

Describe any other abnormalities:

Salmon 1:

Salmon 2:

Salmon 3:

Salmon 4:

**Forêts, Faune
et Parcs**



Québec